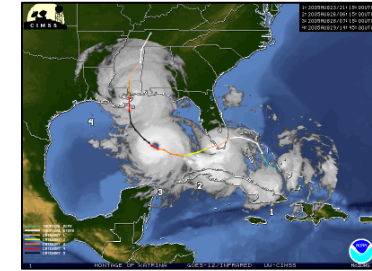


Significant events and disasters can cause primary communications systems to be lost

Events Impacting Communications Systems		
NATURAL	HUMAN	TECHNOLOGICAL
Earthquake	Terrorist attack	Hardware failure
Severe storm (e.g., hurricane, winter storm)	Tampering	Interruption of commercial power
Electrical storm	Theft of assets	Failure of backup electrical systems
Extreme temperatures	Unauthorized use of system resources	Loss of infrastructure connectivity
Flooding	Radio frequency interference	Loss of infrastructure site facility
Wildfire	Interception of signals/wiretapping	Loss of back room or electronics bank
Lightning	Spoofing	Software failure



Planning and implementing comprehensive primary and back-up communications solutions is essential to maintaining critical operations